

Welcome to today's WIOA Unified State Plan Public Forum

Introduction - Lavon Nelson

Facilitator - Cameron Sweatman – KEB

WIOA core and required partner representatives are in attendance to observe and answer questions as needed

Overview of Today's Agenda

PRESENTATION PROVIDES
FOUNDATIONAL INFORMATION
ON THE ELEMENTS OF THE
UNIFIED STATE PLAN

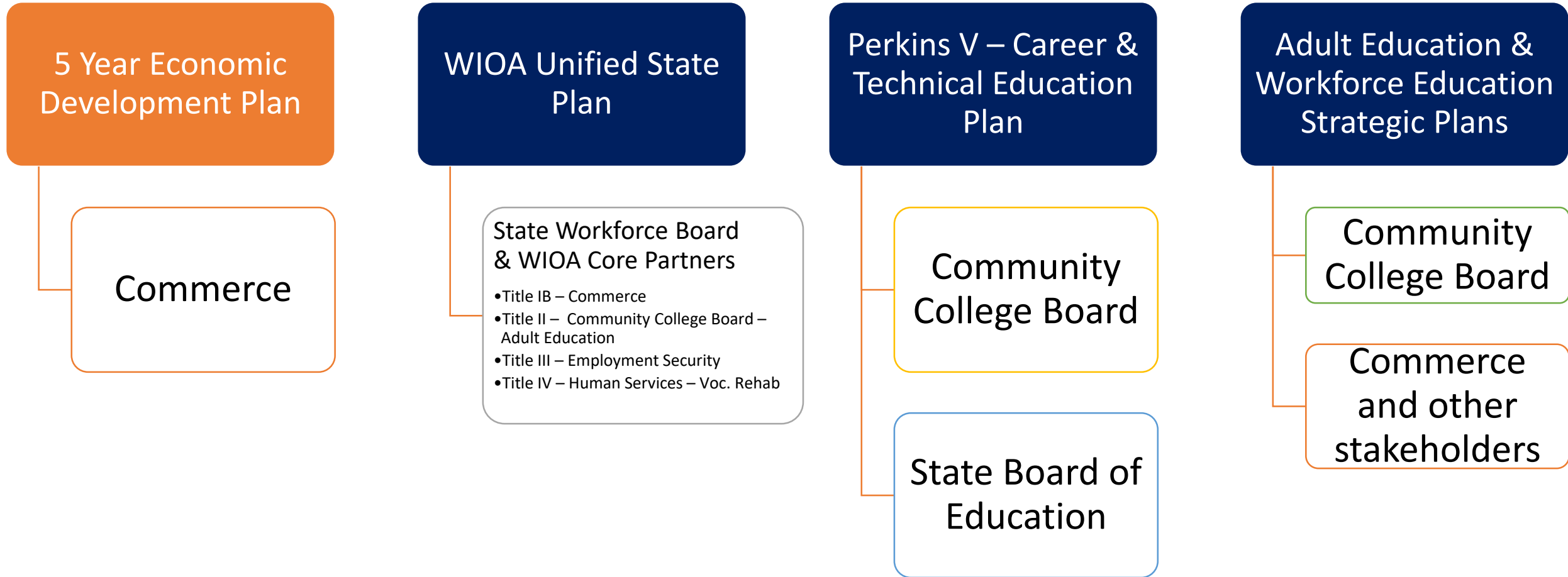
REVIEW OF THE STATE
STRATEGIES THAT UNDERPIN
ILLINOIS' COMMITMENT TO
ENGAGE AND SUPPORT ALL
PARTS OF OUR EDUCATION,
WORKFORCE, AND ECONOMIC
DEVELOPMENT SYSTEMS.

DISCUSSION AND BRAINSTORM
ON THE STATE STRATEGIES

TIME FOR PUBLIC COMMENT
AND QUESTIONS

Key Workforce Related Plans

Federally Mandated Plans / Federal Requirements



WIOA Principles

Prioritizes collaboration and alignment between employment, education and training programs

Program Alignment

- Create employer-driven training solutions

Increased Accountability

- Establish common performance measures with sanctions for core partners
- Increase transparency with reporting

Enhanced Service Delivery

- Expand career pathways through public-private partnerships
- Focus training on the skills that businesses need



WIOA Core Partners in Illinois

Title IB WIOA

IDCEO

Work
Readiness &
Training

Adults,
Dislocated
Workers &
Youth

Title II Adult Education

ICCB

Adult
Education &
Literacy

Integrated
Education &
Training

Workforce
Preparation

Title III Wagner- Peyser

IDES

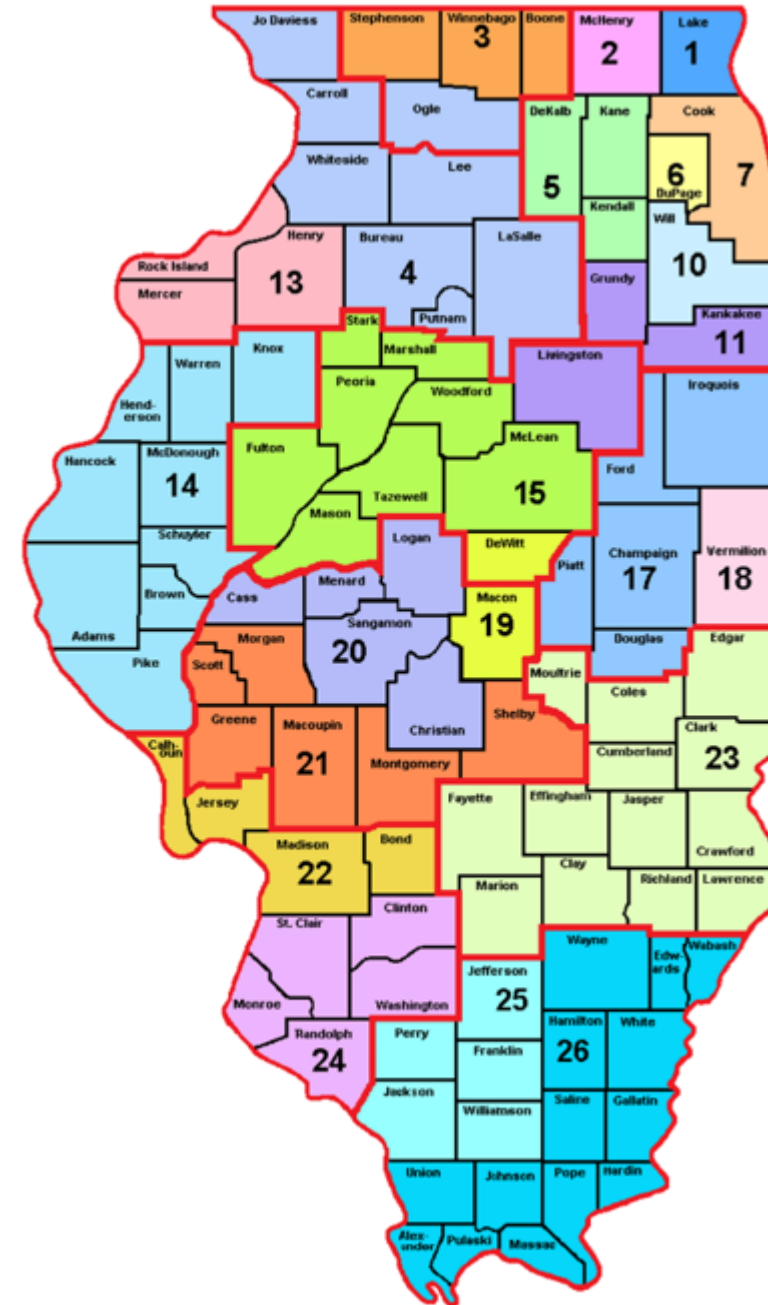
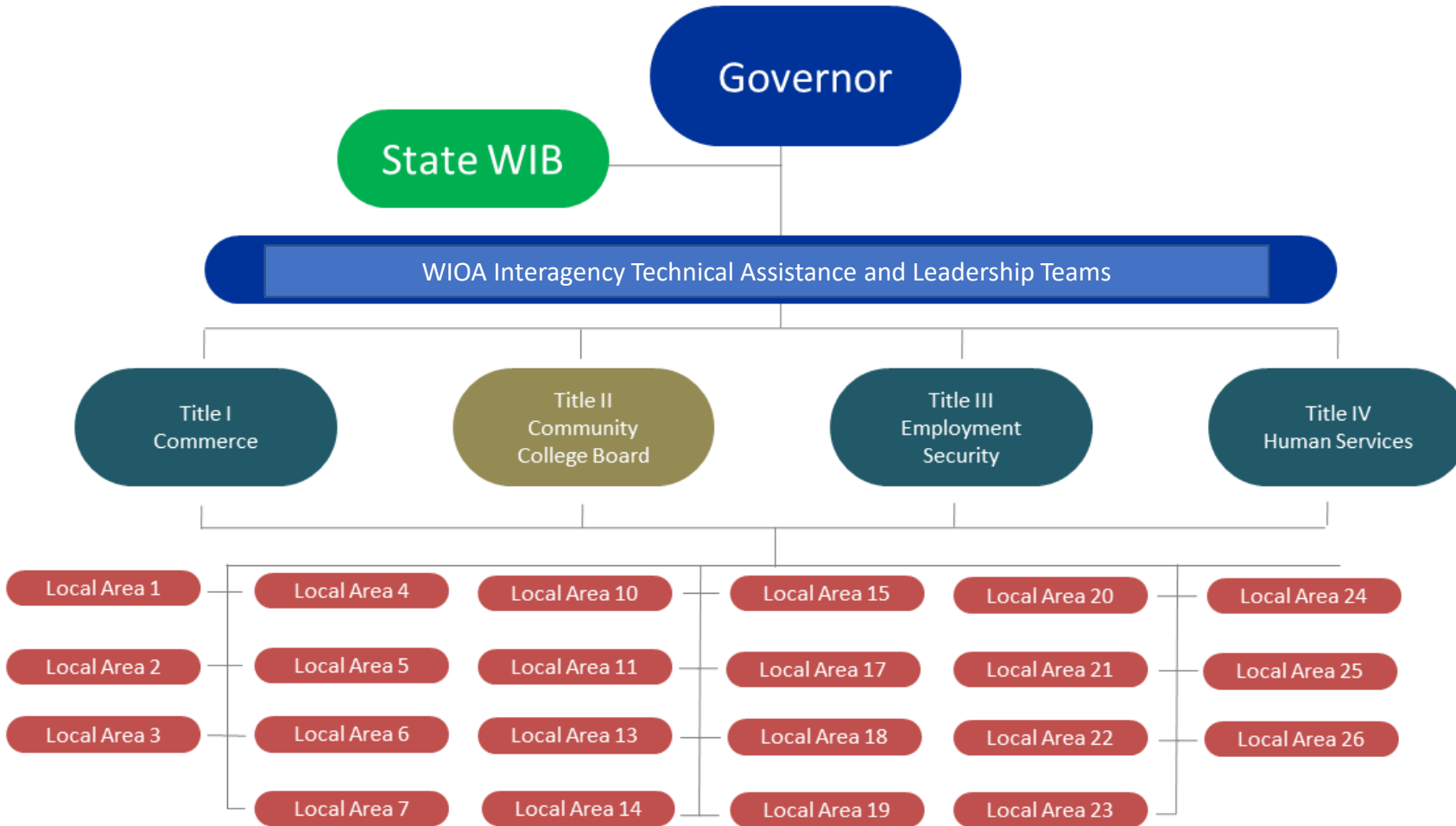
Employment
Services

Title IV Vocational Rehab

IDHS

Disability
Training &
Employment

Illinois WIOA System



2020 WIOA Unified State Plan

The Illinois Workforce Innovation and Opportunity Act (WIOA) Unified State Plan provides a vision of the Governor's integration of workforce, education and economic development policy and programs for the State of Illinois.

Additionally, the WIOA Unified State Plan also serves as a federal compliance document for the United States Departments of Labor and Education under the federal WIOA.



Unified State Plan Vision

Promote business-driven talent solutions that integrate education, workforce and economic development resources across systems to provide businesses, individuals and communities with the opportunity to prosper and contribute to growing the state's economy.



Unified State Plan Vision

Promote business-driven talent solutions that integrate education, workforce and economic development resources across systems to provide businesses, individuals and communities with the opportunity to prosper and contribute to growing the state's economy.

Unified State Plan Principles 2020

1

Demand-Driven Orientation

2

Strong Partnerships with Business at All Levels

3

Pathways to Careers of Today and Tomorrow

4

Cross-agency Collaboration and Connections

5

Integrated Service Delivery

6

Equitable Access and Opportunity for All Populations

7

Clear Metrics for Progress and Success

8

Focus on Continuous Improvement and Innovation

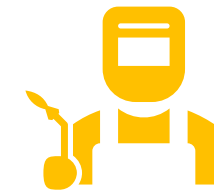
Unified State Plan Key Goals



Unite workforce development partners around regional cluster strategies: Regional cluster strategies will focus resources on the industries with the highest potential to add jobs and increase prosperity in regions across Illinois. These strategies bring together the public and private sectors in each region to build on their unique strengths.



Prepare Illinois' workers for a career, not just their next job: Regardless of background, life circumstances, or education level, Illinois workers can be prepared for high-demand careers by developing core academic, technical, and essential employability skills throughout their lifetimes.



Connect job seekers with employers: Assist Illinois businesses to find the productive workers they need, through more efficient training and better services for job seekers and employers.

State Strategies to Achieve These Goals: Six essential state strategies underpin Illinois' commitment to engage and support all parts of our education, workforce, and economic development systems.



Strategy 1: Coordinate Demand-Driven Strategic Planning at the State and Regional Levels



Strategy 2: Support Employer-Driven Regional Sector Initiatives



Strategy 3: Provide Economic Advancement for all Populations through Career Pathways



Strategy 4: Expand Service Integration



Strategy 5: Promote Improved Data-Driven Decision-Making



Strategy 6: Advance Public-Private Data Infrastructure

Federal Requirements

Strategic Elements

Operational Elements

Program-Specific Plans

- Title I-B: Adult, Dislocated Worker and Youth Activities
- Wagner-Peyser Act Program: Employment Services and Agricultural Outreach
- Adult Education and Family Literacy Program
- Vocational Rehabilitation

Strategic Elements



ECONOMIC ANALYSIS



EMERGING AND
EXISTING INDUSTRY
SECTORS



EMPLOYER'S
EMPLOYMENT
NEEDS



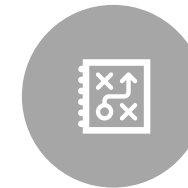
WORKFORCE
ANALYSIS



SKILLS GAPS



VISION, PRINCIPLES
AND GOALS



STATE STRATEGIES

Operational Elements



State Board Functions



Implementation of the State's Strategy



State Operating System and Policies



Assessment and Evaluation of Program and One-Stop Program Partners



Distribution of Funds for Core Programs



Program Data



Priority of Service for Veterans



Addressing Accessibility of the One-Stop Delivery System

For Individuals with Disabilities

For Individuals who are English Language Learners

State Strategies



COORDINATE DEMAND-DRIVEN STRATEGIC PLANNING AT THE STATE AND REGIONAL LEVELS



SUPPORT EMPLOYER-DRIVEN REGIONAL SECTOR INITIATIVES



PROVIDE ECONOMIC ADVANCEMENT FOR ALL POPULATIONS THROUGH CAREER PATHWAYS



EXPAND SERVICE INTEGRATION



PROMOTE IMPROVED DATA DRIVEN DECISION MAKING



ADVANCE PUBLIC-PRIVATE DATA INFRASTRUCTURE



Focus of
Today's
Discussion



Questions

- Which of the activities identified here should be prioritized?
- What recommendations do you have to make the strategy achievable?
- Is there something more we should be considering regarding this strategy?

Strategy 2: Support
Employer-Driven
Regional Sector
Initiatives

Operationalization:
Strategy 2 Activity
Examples

Activities 2.1 – 2.2

- 2.1 - *Promote Employer-Driven Regional Sector Partnerships*
- 2.2 - *Promote Sector-Based Business Services and Employer Initiatives*

Strategy 3: Provide
Economic
Advancement for all
Populations through
Career Pathways

Operationalization:
Strategy 3 Activity
Examples

Activities 3.1 – 3.4

- 3.1 - *Promote Leading Career Pathway Models and Best Practices*
- 3.2 - *Expand and Improve Bridge and Integrated Education and Training Models*
- 3.3 - *Promote Innovative Career Pathway Solutions*
- 3.4 - *Promote the Use of All Types of Apprenticeships*

Strategy 4: Expand Service Integration

Operationalization:
Strategy 4 Activity
Examples

Activities 4.1 – 4.4

- 4.1 - *Provide Coordinated and Enhanced Career Services*
- 4.2 - *Provide Coordinated and Enhanced Case Management Services*
- 4.3 - *Promote Continuous Improvement and Ongoing Professional Development*
- 4.4 - *Promote the Incorporation of Required Partner Services*

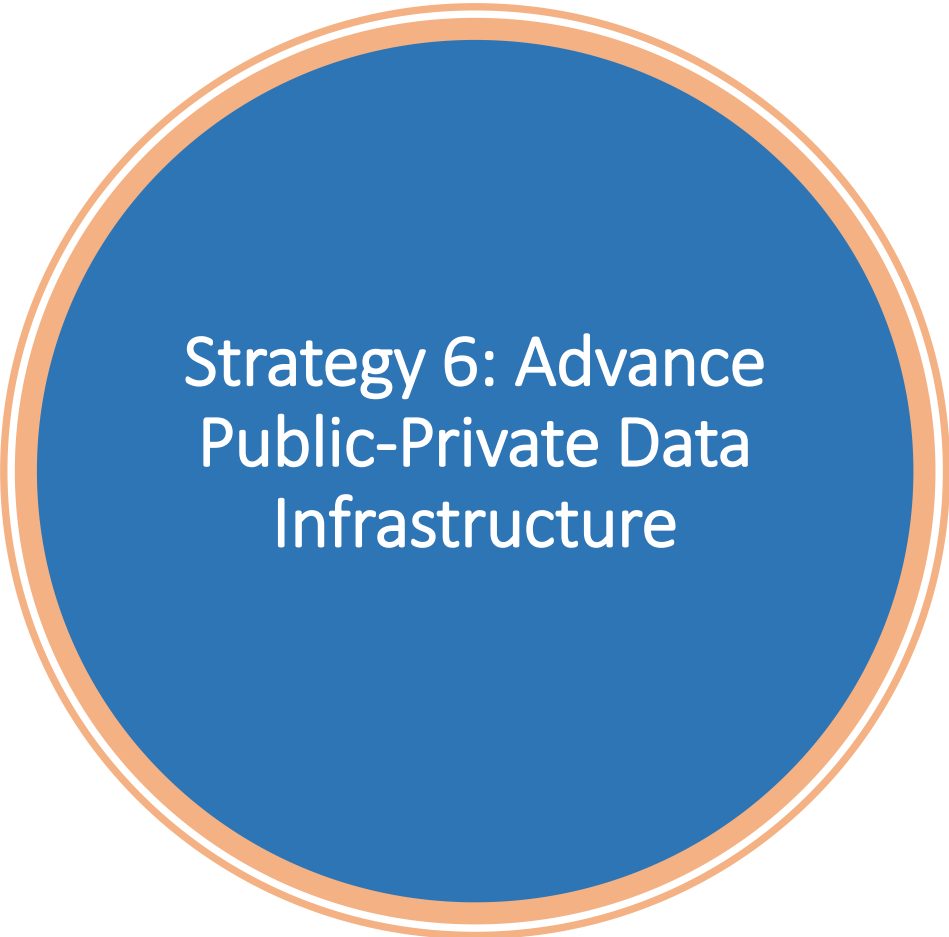
Strategy 5: Promote
Improved Data-
Driven Decision-
Making

Operationalization:
Strategy 5 Activity
Examples

Activities 5.1 – 5.4

- 5.1 - *Improve Employer Tools for Communicating and Accessing Information*
- 5.2 - *Improve Access to Career and Education Guidance Tools and Information*
- 5.3 - *Improve Access and Integration of Eligible Training Provider Lists*
- 5.4 - *Improve Access and Utilization of Labor Market and Workforce System Information*

***Discussion in small groups about 5 of the 6 strategies and how to operationalize it. Folks could then give ideas for activities or other related ideas.



Strategy 6: Advance Public-Private Data Infrastructure

Operationalization:
Strategy 6 Activity
Examples

Activities 6.1 – 6.3

- 6.1 - *Enhance the State Labor Market Information System*
- 6.2 - *Expand and Improve the State Longitudinal Data System*
- 6.3 - *Improve the Integration of Program and Case Management Information Systems*

Time for Small Groups

- Which of the activities identified here should be prioritized?
- What recommendations do you have to make the strategy achievable?
- Is there something more we should be considering regarding this strategy?



Send Us Your Public Comments

- Public comments are invited via the following email address through February 9, 2020: CWD-wioaplan@ad.siu.edu
- You can find the Unified State Plan draft to review here: <https://www.illinoisworknet.com/WIOA/Resources/Pages/StateUnifiedPlan.aspx>

Take-Away Question

What role can you play to facilitate this over the next four years?